

# Larus armenicus

## ARMENIAN GULL

**SPEC 2** (1994: —) **Status** Localised

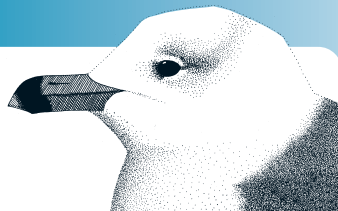
**Criteria** ≥90% breed at ≤10 sites

**European IUCN Red List Category** —

**Criteria** —

**Global IUCN Red List Category** —

**Criteria** —



*Larus armenicus* breeds locally in Turkey, Armenia and Georgia, with Europe now known to constitute >50% of its global breeding range. Its European breeding population is relatively small (<22,000 pairs), but the trend between 1970–1990 was not known. The trend in Georgia during 1990–2000 was also unknown, but the species was stable or increased in Armenia and Turkey, and underwent a moderate increase overall. Nevertheless, more than 90% of the European breeding population occurs at just 10 sites (see Appendix 5), and consequently it is evaluated as Localised.

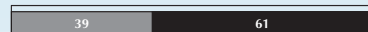


Country	Breeding pop. size (pairs)	Year(s)	Trend	Mag.%	References
Armenia	<b>10,000 – 12,000</b>	97–02	0	<b>0–19</b>	
Georgia	Present	03	?	–	
Turkey	5,000 – 10,000	01	+	20–29	
<b>Total (approx.)</b>	15,000 – 22,000		<b>Overall trend</b>	Moderate increase	
<b>Breeding range</b>	>20,000 km <sup>2</sup>		<b>Gen. length</b>	13	% Global pop. 50–74

Country	Winter pop. size (individuals)	Year(s)	Trend	Mag.%	References
Cyprus	10 – 100	97–02	0	0–9	
Turkey	(2,000 – 8,000)	91–01	+	20–29	
<b>Total (approx.)</b>	>2,000		<b>Overall trend</b>	Unknown	
<b>% in European IBAs</b>	4–15		<b>Gen. length</b>	13	% Global pop. 25–49

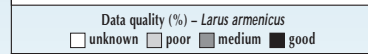
2000 population



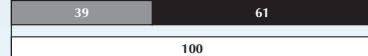
1990 population



1990–2000 trend



1970–1990 trend



2000 population



1990 population



1990–2000 trend



1970–1990 trend

